

PRODUCT CATALOGUE





CONTENTS

LOCK NUTS

-KM(L) and HM .. T.....	4-5
-HM 30	6
-HM 31	7

LOCK WASHERS

-MB(L)	8-9-10
--------------	--------

ADAPTER SLEEVES

-H2 - H3- H31	11-12
---------------------	-------

WITHDRAWAL SLEEVES

-AH(X)3 - AH(X)23 - AH(X)32	13-14
-----------------------------------	-------

TECHNICAL DRAWINGS	15
--------------------------	----



Who We Are?

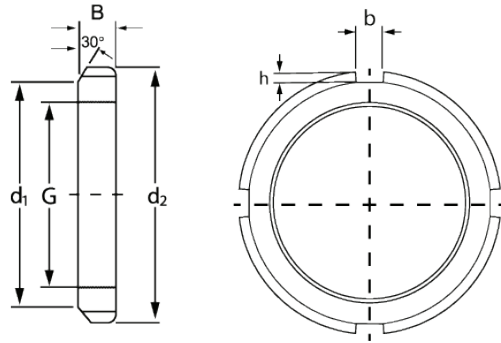
Emphasizing customer satisfaction as its core principle, Mertas Machinery was founded in 1983 to provide made-to-order customised machinery and spare parts to all relevant sectors, in particular the casting industry. Not long after Mertas Machinery expanded its portfolio to produce a wide assortment of bearing accessories such as lock nuts, lock washers, adapter sleeves and withdrawal sleeves, used for locating and locking bearings in position on a shaft.

Growing in experience and strengthening customer relationships, Mertas Machinery has been running its operations using best practice for over 30 years along with its advanced machinery and staff of qualified engineers and technicians.

Carrying out its production in CNC processing centers and with CNC and manual turning machines with the support of CAD/CAM software, Mertas Machinery pursues a policy of quality which focuses on the needs and expectations of the end customer producing more than 200 different products numbering over 450,000 every year.



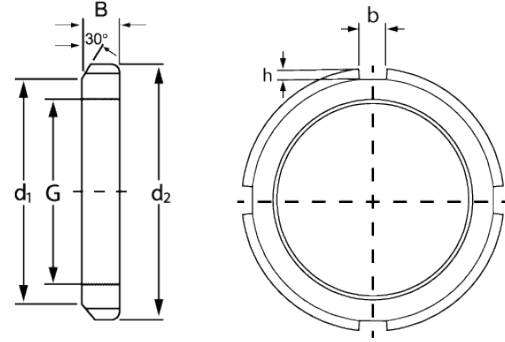
Lock Nuts



Series **KM - KML- HM .. T** G: M10x0.75 - Tr280x4

Lock Nut	G	d ₁	d ₂	B	b	h	Weight	Lock Washer
		mm	mm	mm	mm	mm	kg	
KM 0	M 10 x 0,75	13,5	18	4	3	2	0,004	MB 0
KM 1	M 12 x 1	17	22	4	3	2	0,006	MB 1
KM 2	M 15 x 1	21	25	5	4	2	0,009	MB 2
KM 3	M 17 x 1	24	28	5	4	2	0,012	MB 3
KM 4	M 20 x 1	26	32	6	4	2	0,025	MB 4
KM 5	M 25 x 1,5	32	38	7	5	2	0,028	MB 5
KM 6	M 30 x 1,5	38	45	7	5	2	0,039	MB 6
KM 7	M 35 x 1,5	44	52	8	5	2	0,059	MB 7
KM 8	M 40 x 1,5	50	58	9	6	2,5	0,078	MB 8
KM 9	M 45 x 1,5	56	65	10	6	2,5	0,11	MB 9
KM 10	M 50 x 1,5	61	70	11	6	2,5	0,14	MB 10
KM 11	M 55 x 2	67	75	11	7	3	0,15	MB 11
KM 12	M 60 x 2	73	80	11	7	3	0,16	MB 12
KM 13	M 65 x 2	79	85	12	7	3	0,19	MB 13
KM 14	M 70 x 2	85	92	12	8	3,5	0,23	MB 14
KM 15	M 75 x 2	90	98	13	8	3,5	0,27	MB 15
KM 16	M 80 x 2	95	105	15	8	3,5	0,36	MB 16
KM 17	M 85 x 2	102	110	16	8	3,5	0,41	MB 17
KM 18	M 90 x 2	108	120	16	10	4	0,51	MB 18
KM 19	M 95 x 2	113	125	17	10	4	0,55	MB 19
KM 20	M 100 x 2	120	130	18	10	4	0,64	MB 20
KM 21	M 105 x 2	126	140	18	12	5	0,79	MB 21
KM 22	M 110 x 2	133	145	19	12	5	0,87	MB 22
KM 23	M 115 x 2	137	150	19	12	5	0,91	MB 23
KML 24	M 120 x 2	135	145	20	12	5	0,69	MBL 24
KM 24	M 120 x 2	138	155	20	12	5	0,97	MB 24
KM 25	M 125 x 2	148	160	21	12	5	1,1	MB 25

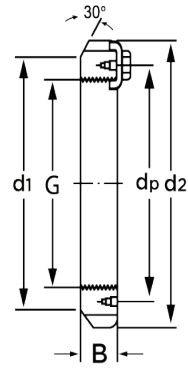
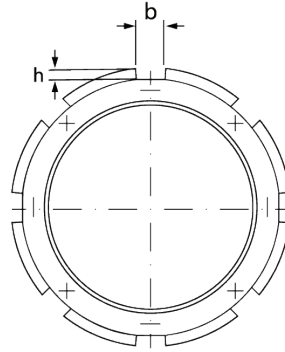
Lock Nuts



Series **KM - KML- HM .. T** G: M10x0.75 - Tr280x4

Lock Nut	G	d ₁	d ₂	B	b	h	Weight	Lock Washer
		mm	mm	mm	mm	mm	kg	
KML 26	M 130 x 2	145	155	21	12	5	0,8	MBL 26
KM 26	M 130 x 2	149	165	21	12	5	1,1	MB 26
KM 27	M 135 x 2	160	175	22	14	6	1,4	MB 27
KML 28	M 140 x 2	155	165	22	12	5	0,92	MBL 28
KM 28	M 140 x 2	160	180	22	14	6	1,4	MB 28
KM 29	M 145 x 2	171	190	24	14	6	1,8	MB 29
KML30	M 150 x 2	170	180	24	14	5	1,25	MBL 30
KM 30	M 150 x 2	171	195	24	14	6	1,9	MB 30
KM 31	M 155 x 3	182	200	25	16	7	2,1	MB 31
KML 32	M 160 x 3	180	190	25	14	5	1,4	MBL 32
KM 32	M 160 x 3	182	210	25	16	7	2,3	MB 32
KM 33	M 165 x 3	193	210	26	16	7	2,3	MB 33
KML 34	M 170 x 3	190	200	26	16	5	1,55	MBL 34
KM 34	M 170 x 3	193	220	26	16	7	2,35	MB 34
KML 36	M 180 x 3	200	210	27	16	5	1,8	MBL 36
KM 36	M 180 x 3	203	230	27	18	8	2,8	MB 36
KML 38	M 190 x 3	210	220	28	16	5	1,85	MBL 38
KM 38	M 190 x 3	214	240	28	18	8	3,05	MB 38
KML 40	M 200 x 3	222	240	29	18	8	2,6	MBL 40
KM 40	M 200 x 3	226	250	29	18	8	3,35	MB 40
HM 42 T	Tr 210 x 4	238	270	30	20	10	5,1	-
HM 44 T	Tr 220 x 4	250	280	32	20	10	4,75	MB 44
HM 46 T	Tr 230 x 4	260	290	34	20	10	5,45	-
HM 48 T	Tr 240 x 4	270	300	34	20	10	5,6	MB 48
HM 50 T	Tr 250 x 4	290	320	36	20	10	7,45	-
HM 52 T	Tr 260 x 4	300	330	36	24	12	7,55	MB 52
HM 56 T	Tr 280 x 4	320	350	38	24	12	8,65	MB 56

Lock Nuts

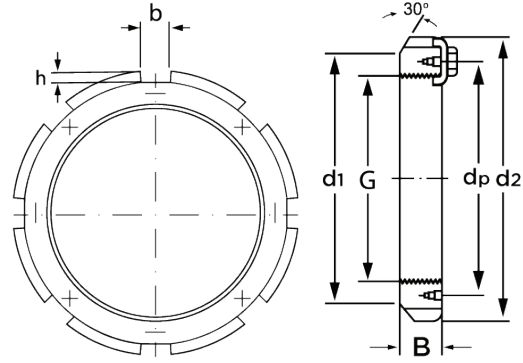


Series **HM 30**

G: Tr220x4 - Tr1120x8

Lock Nut	G	d ₁	d _p	d ₂	B	b	h	Weight	Locking Clip
		mm	mm	mm	mm	mm	mm	kg	
HM 3044	Tr 220 x 4	242	229	260	30	20	9	3,09	MS 3044
HM 3048	Tr 240 x 4	270	253	290	34	20	10	5,12	MS 3048
HM 3052	Tr 260 x 4	290	273	310	34	20	10	5,54	MS 3052-48
HM 3056	Tr 280 x 4	310	293	330	38	24	10	5,75	MS 3056
HM 3060	Tr 300 x 4	336	316	360	42	24	12	8,35	MS 3060
HM 3064	Tr 320 x 5	356	336	380	42	24	12	9	MS 3064-68
HM 3068	Tr 340 x 5	376	356	400	45	24	12	11	MS 3068-64
HM 3072	Tr 360 x 5	394	375	420	45	28	13	11,5	MS 3072
HM 3076	Tr 380 x 5	422	399	450	48	28	14	15	MS 3076-80
HM 3080	Tr 400 x 5	442	419	470	52	28	14	17	MS 3080-76
HM 3084	Tr 420 x 5	462	439	490	52	32	14	18,5	MS 3084
HM 3088	Tr 440 x 5	490	463	520	60	32	15	26	MS 3088-92
HM3 092	Tr 460 x 5	510	483	540	60	32	15	27	MS 3092-88
HM 3096	Tr 480 x 5	530	503	560	60	36	15	28,7	MS 3096
HM 30/500	Tr 500 x 5	550	523	580	68	36	15	33,5	MS 30/500-96
HM 30/530	Tr 530 x 6	590	558	630	68	40	20	42,5	MS 30/600-530
HM 30/560	Tr 560 x 6	610	583	650	75	40	20	44,5	MS 30/560
HM 30/600	Tr 600 x 6	660	628	700	75	40	20	52,5	MS 30/600-530
HM 30/630	Tr 630 x 6	690	658	730	75	45	20	55	MS 30/630
HM 30/670	Tr 670 x 6	740	703	780	80	45	20	68,5	MS 30/670
HM 30/710	Tr 710 x 7	780	742	830	90	50	25	91,5	MS 30/710
HM 30/750	Tr 750 x 7	820	782	870	90	55	25	94	MS 30/800-750
HM 30/800	Tr 800 x 7	870	832	920	90	55	25	99,5	MS 30/800-750
HM 30/850	Tr 850 x 7	925	887	980	90	60	25	115	MS 30/900-850
HM 30/900	Tr 900 x 7	975	937	1030	100	60	25	131	MS 30/900-850
HM 30/950	Tr 950 x 8	1025	985	1080	100	60	25	139	MS 30-950
HM 30/1000	Tr 1000 x 8	1085	1040	1140	100	60	25	157	MS30-1000
HM 30/1060	Tr 1060 x 8	1145	1100	1200	100	60	25	166	MS30-1000
HM 30/1120	Tr 1120 x 8	1205	1160	1260	100	60	25	175	MS30-1000

Lock Nuts

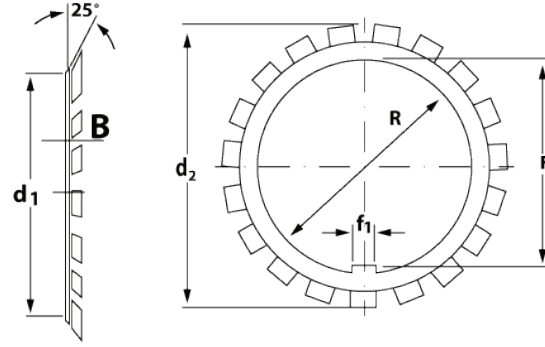
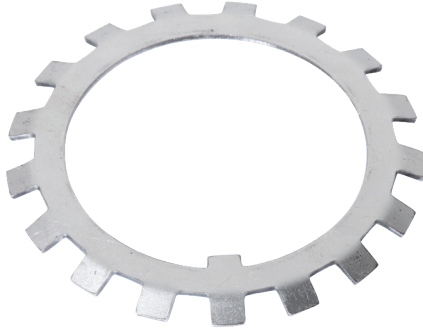


Series **HM 31**

G: Tr300x4 - Tr1120x8

Lock Nut	G	d ₁	d _p	d ₂	B	b	h	Weight	Locking Clip
		mm	mm	mm	mm	mm	mm	kg	
HM 3160	Tr 300 x 4	340	326	380	40	24	12	11,5	MS3160
HM 3164	Tr 320 x 5	360	346	400	42	24	12	13	MS3164
HM 3168	Tr 340 x 5	400	373	440	55	28	15	24	MS3168-72
HM 3172	Tr 360 x 5	420	393	460	58	28	15	26,5	MS3172-68
HM 3176	Tr 380 x 5	440	415	490	60	32	18	32	MS3176
HM 3180	Tr 400 x 5	460	440	520	62	32	18	38	MS3180-84
HM 3184	Tr 420 x 5	490	460	540	70	32	18	45	MS3184-80
HM 3188	Tr 440 x 5	510	478	560	70	36	20	46,5	MS3188-92
HM 3192	Tr 460 x 5	540	498	580	75	36	20	50,5	MS3192-88
HM 3196	Tr 480 x 5	560	528	620	75	36	20	62	MS3196
HM 31/500	Tr 500 x 5	580	539	630	80	40	23	62,1	MS31/500
HM 31/530	Tr 530 x 6	610	-	670	80	40	23	71,2	MS31/530
HM 31/560	Tr 560 x 6	650	-	710	85	45	25	85,6	MS31/560
HM 31/600	Tr 600 x 6	690	-	750	85	45	25	91,7	MS31/600
HM 31/630	Tr 630 x 6	730	-	800	95	50	28	122	MS31/630
HM 31/670	Tr 670 x 6	775	-	850	106	50	28	156	MS31/670
HM 31/710	Tr 710 x 7	825	-	900	106	55	30	173	MS31/710
HM 31/750	Tr 750 x 7	875	-	950	112	60	34	202	MS31/750
HM 31/800	Tr 800 x 7	925	-	1000	112	60	34	215	MS31/750
HM 31/850	Tr 850 x 7	975	-	1060	118	70	38	246	MS31/850
HM 31/900	Tr 900 x 7	1030	-	1120	125	70	38	293	MS31/900
HM 31/950	Tr 950 x 8	1080	-	1170	125	70	38	310	MS31/950
HM 31/1000	Tr 1000 x 8	1140	-	1240	125	70	38	361	MS31/1000
HM 31/1060	Tr 1060 x 8	1210	-	1300	125	70	38	386	MS31/1000
HM 31/1120	Tr 1120 x 8	1270	-	1360	125	70	38	427	MS31/1000

Lock Washers

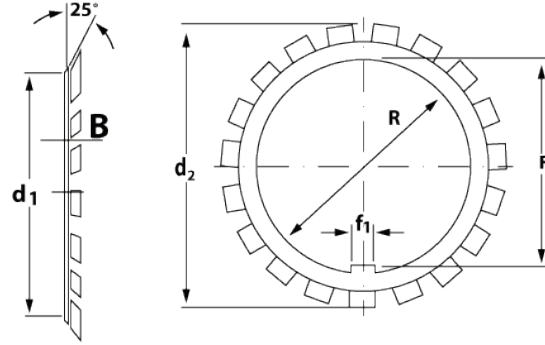
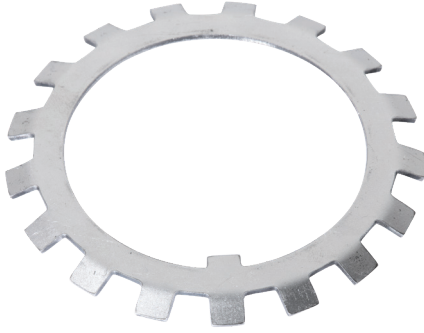


Series MB(L)

R: 10 - 280 mm

Lock Washer	R	d ₁	d ₂	B	f ₁	F	Weight
	mm	mm	mm	mm	mm	mm	kg
MB 0	10	13,5	21	1	3	8,5	0,001
MB 1	12	17	25	1	3	10,5	0,002
MB 1 A	12	17	25	1,2	3	10,5	0,0025
MB 2	15	21	28	1	4	13,5	0,003
MB 2 A	15	21	28	1,2	4	13,5	0,0035
MB 3	17	24	32	1	4	15,5	0,003
MB 3 A	17	24	32	1,2	4	15,5	0,0035
MB 4	20	26	36	1	4	18,5	0,004
MB 4 A	20	26	36	1,2	4	18,5	0,005
MB 5	25	32	42	1,25	5	23	0,006
MB 5 A	25	32	42	1,8	5	23	0,0085
MB 6	30	38	49	1,25	5	27,5	0,008
MB 6 A	30	38	49	1,8	5	27,5	0,011
MB 7	35	44	57	1,25	6	32,5	0,011
MB 7 A	35	44	57	1,8	6	32,5	0,016
MB 8	40	50	62	1,25	6	37,5	0,013
MB 8 A	40	50	62	1,8	6	37,5	0,018
MB 9	45	56	69	1,25	6	42,5	0,015
MB 9 A	45	56	69	1,8	6	42,5	0,021
MB 10	50	61	74	1,25	6	47,5	0,016
MB 10 A	50	61	74	1,8	6	47,5	0,023
MB 11	55	67	81	1,5	8	52,5	0,022
MB 11 A	55	67	81	2,5	8	52,5	0,037

Lock Washers

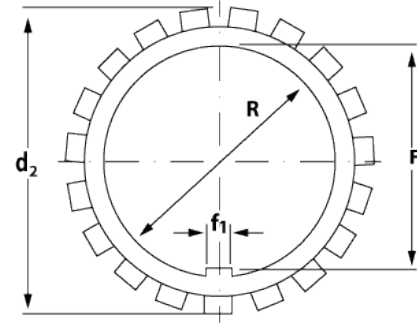
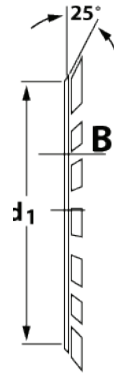
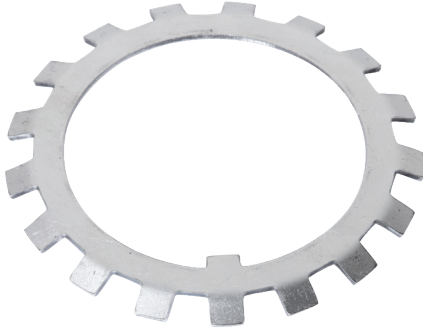


Series MB(L)

R: 10 - 280 mm

Lock Washer	R	d ₁	d ₂	B	f ₁	F	Weight
	mm	mm	mm	mm	mm	mm	kg
MB 12	60	73	86	1,5	8	57,5	0,024
MB 12 A	60	73	86	2,5	8	57,5	0,04
MB 13	65	79	92	1,5	8	62,5	0,03
MB 13 A	65	79	92	2,5	8	62,5	0,05
MB 14	70	85	98	1,5	8	66,5	0,032
MB 14 A	70	85	98	2,5	8	66,5	0,053
MB 15	75	90	104	1,5	8	71,5	0,035
MB 15 A	75	90	104	2,5	8	71,5	0,058
MB 16	80	95	112	1,75	10	76,5	0,046
MB 16 A	80	95	112	2,5	10	76,5	0,066
MB 17	85	102	119	1,75	10	81,5	0,053
MB 17 A	85	102	119	2,5	10	81,5	0,076
MB 18	90	108	126	1,75	10	86,5	0,061
MB 18 A	90	108	126	2,5	10	86,5	0,087
MB 19	95	113	133	1,75	10	91,5	0,066
MB 19 A	95	113	133	2,5	10	91,5	0,094
MB 20	100	120	142	1,75	12	96,5	0,077
MB 20 A	100	120	142	2,5	12	96,5	0,11
MB 21	105	126	145	1,75	12	100,5	0,083
MB 22	110	133	154	1,75	12	105,5	0,091
MB 23	115	137	159	2	12	110,5	0,11
MBL 24	120	135	152	2	14	115	0,07
MB 24	120	138	164	2	14	115	0,11
MB 25	125	148	170	2	14	120	0,12

Lock Washers

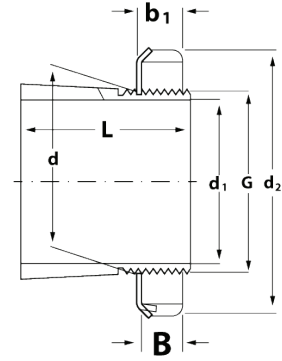


Series MB(L)

R: 10 - 280 mm

Lock Washer	R	d ₁	d ₂	B	f ₁	F	Weight
	mm	mm	mm	mm	mm	mm	kg
MBL 26	130	145	161	2	14	125	0,08
MB 26	130	149	175	2	14	125	0,12
MB 27	135	160	185	2	14	130	0,14
MBL 28	140	155	172	2	16	135	0,09
MB 28	140	160	192	2	16	135	0,14
MB 29	145	172	202	2	16	140	0,17
MBL 30	150	170	189	2	16	145	0,1
MB 30	150	171	205	2	16	145	0,18
MB 31	155	182	212	2,5	16	147,5	0,2
MBL 32	160	180	199	2,5	18	154	0,14
MB 32	160	182	217	2,5	18	154	0,22
MB 33	165	193	222	2,5	18	157,5	0,24
MBL 34	170	190	211	2,5	18	164	0,15
MB 34	170	193	232	2,5	18	164	0,24
MBL 36	180	200	222	2,5	20	174	0,16
MB 36	180	203	242	2,5	20	174	0,26
MBL 38	190	210	232	2,5	20	184	0,17
MB 38	190	214	252	2,5	20	184	0,26
MBL 40	200	222	245	2,5	20	194	0,22
MB 40	200	226	262	2,5	20	194	0,28
MB 44	220	250	292	3	24	213	0,35
MB 48	240	270	312	3	24	233	0,45
MB 52	260	300	342	3	28	253	0,65
MB 56	280	320	362	3	28	273	0,7

Adapter Sleeves

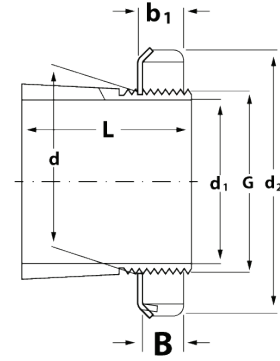
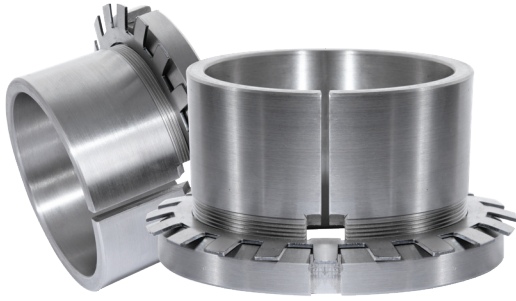


Series H2 - H3- H31

d_1 17 - 180 mm

Adapter Sleeve	G	d_1	d	d_2	L	B	b_1	Weight	Lock Nut	Lock Washer
		mm	mm	mm	mm	mm	mm	kg		
H 204	M 20 x 1	17	20	32	24	6	7	0,036	KM 4	MB 4
H 304	M 20 x 1	17	20	32	28	6	7	0,04	KM 4	MB 4
H 205	M 25 x 1,5	20	25	38	26	7	8	0,064	KM 5	MB 5
H 305	M 25 x 1,5	20	25	38	29	7	8	0,071	KM 5	MB 5
H 206	M 30 x 1,5	25	30	45	27	7	8	0,086	KM 6	MB 6
H 306	M 30 x 1,5	25	30	45	31	7	8	0,095	KM 6	MB 6
H 207	M 35 x 1,5	30	35	52	29	8	9	0,12	KM 7	MB 7
H 307	M 35 x 1,5	30	35	52	35	8	9	0,14	KM 7	MB 7
H 208	M 40 x 1,5	35	40	58	31	9	10	0,16	KM 8	MB 8
H 308	M 40 x 1,5	35	40	58	36	9	10	0,17	KM 8	MB 8
H 209	M 45 x 1,5	40	45	65	33	10	11	0,21	KM 9	MB 9
H 309	M 45 x 1,5	40	45	65	39	10	11	0,23	KM 9	MB 9
H 210	M 50 x 1,5	45	50	70	35	11	12	0,24	KM 10	MB 10
H 310	M 50 x 1,5	45	50	70	42	11	12	0,27	KM 10	MB 10
H 211	M 55 x 2	50	55	75	37	11	12,5	0,28	KM 11	MB 11
H 311	M 55 x 2	50	55	75	45	11	12,5	0,32	KM 11	MB 11
H 212	M 60 x 2	55	60	80	38	11	13	0,31	KM 12	MB 12
H 312	M 60 x 2	55	60	80	47	11	13	0,36	KM 12	MB 12
H 213	M 65 x 2	60	65	85	40	12	13,5	0,36	KM 13	MB 13
H 313	M 65 x 2	60	65	85	50	12	13,5	0,42	KM 13	MB 13
H 314	M 70 x 2	60	70	92	52	12	13,5	0,67	KM 14	MB 14
H 215	M 75 x 2	65	75	98	43	13	14,5	0,66	KM 15	MB 15
H 315	M 75 x 2	65	75	98	55	13	14,5	0,78	KM 15	MB 15

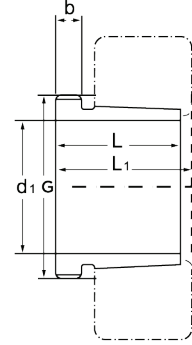
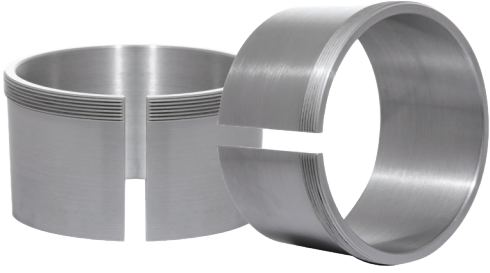
Adapter Sleeves



Series H2 - H3- H31 d_1 17 - 180 mm

Adapter Sleeve	G	d_1	d	d_2	L	B	b_1	Weight	Lock Nut	Lock Washer
		mm	mm	mm	mm	mm	mm	kg		
H 216	M 80 x 2	70	80	105	46	15	17	0,81	KM 16	MB 16
H 316	M 80 x 2	70	80	105	59	15	17	0,95	KM 16	MB 16
H 217	M 85 x 2	75	85	110	50	16	18	0,94	KM 17	MB 17
H 317	M 85 x 2	75	85	110	63	16	18	1,1	KM 17	MB 17
H 218	M 90 x 2	80	90	120	52	16	18	1,1	KM 18	MB 18
H 318	M 90 x 2	80	90	120	65	16	18	1,3	KM 18	MB 18
H 219	M 95 x 2	85	95	125	55	17	19	1,25	KM 19	MB 19
H 319	M 95 x 2	85	95	125	65	17	19	1,4	KM 19	MB 19
H 220	M 100 x 2	90	100	130	58	18	20	1,4	KM 20	MB 20
H 320	M 100 x 2	90	100	130	71	18	20	1,6	KM 20	MB 20
H 3120	M 100 x 2	90	100	130	76	18	20	1,8	KM 20	MB 20
H 222	M 110 x 2	100	110	145	63	19	21	1,8	KM 22	MB 22
H 322	M 110 x 2	100	110	145	77	19	21	2,05	KM 22	MB 22
H 3122	M 110 x 2	100	110	145	81	19	21	2,1	KM 22	MB 22
H 3124	M 120 x 2	110	120	155	88	20	22	2,5	KM 24	MB 24
H 3126	M 130 x 2	115	130	165	92	21	23	3,45	KM 26	MB 26
H 3128	M 140 x 2	125	140	180	97	22	24	4,1	KM 28	MB 28
H 3130	M 150 x 2	135	150	195	111	24	26	5,25	KM 30	MB 30
H 3132	M 160 x 3	140	160	210	119	25	28	7,25	KM 32	MB 32
H 3134	M 170 x 3	150	170	220	122	26	29	8,1	KM 34	MB 34
H 3136	M 180 x 3	160	180	230	131	27	29,5	9,15	KM 36	MB 36
H 3138	M 190 x 3	170	190	240	141	28	30,5	10,5	KM 38	MB 38
H 3140	M 200 x 3	180	200	250	150	29	31,5	12	KM 40	MB 40

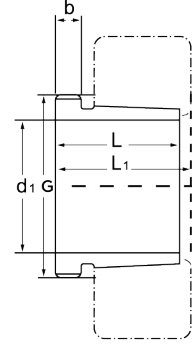
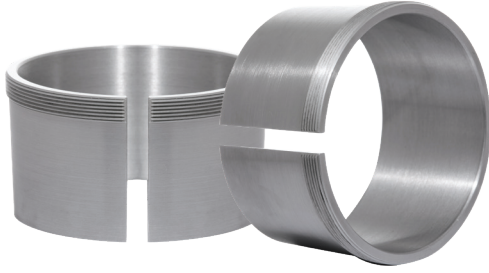
Withdrawal Sleeves



Series AH(X)3 - AH(X)23 - AH(X)32 d_1 35 - 190 mm

Withdrawal Sleeve	G	d_1	L	L_1	B	Lock Nut	Weight
		mm	mm	mm	mm		kg
AH 308	M 45 x 1.5	35	29	32	6	KM 09	0,09
AH 2308	M 45 x 1.5	35	40	43	7	KM 09	0,128
AH 309	M 50 x 1.5	40	31	34	6	KM 10	0,109
AH 2309	M 50 x 1.5	40	44	47	7	KM 10	0,164
AHX 310	M 55 x 2	45	35	38	7	KM 11	0,137
AHX 2310	M 55 x 2	45	50	53	9	KM 11	0,209
AHX 311	M 60 x 2	50	37	40	7	KM 12	0,161
AHX 2311	M 60 x 2	50	54	57	10	KM 12	0,253
AH 312	M 65 x 2	55	40	43	8	KM 13	0,189
AHX 2312	M 65 x 2	55	58	61	11	KM 13	0,297
AH 313	M 75 x 2	60	42	45	8	KM 15	0,253
AH 2313	M 75 x 2	60	61	64	12	KM 15	0,395
AH 314	M 80 x 2	65	43	47	8	KM 16	0,28
AHX 2314	M 80 x 2	65	64	68	12	KM 16	0,466
AH 315	M 85 x 2	70	45	49	8	KM 17	0,313
AHX 2315	M 85 x 2	70	68	72	12	KM 17	0,534
AH 316	M 90 x 2	75	48	52	8	KM 18	0,365
AHX 2316	M 90 x 2	75	71	75	12	KM 18	0,597
AHX 317	M 95 x 2	80	52	56	9	KM 19	0,429
AHX 2317	M 95 x 2	80	74	78	13	KM 19	0,67
AHX 318	M 100 x 2	85	53	57	9	KM 20	0,461
AHX 3218	M 100 x 2	85	63	67	10	KM 20	0,576
AHX 2318	M 100 x 2	85	79	83	14	KM 20	0,779
AHX 319	M 105 x 2	90	57	61	10	KM 21	0,532
AHX 2319	M 105 x 2	90	85	89	16	KM 21	0,886
AHX 320	M 110 x 2	95	59	63	10	KM 22	0,582

Withdrawal Sleeves

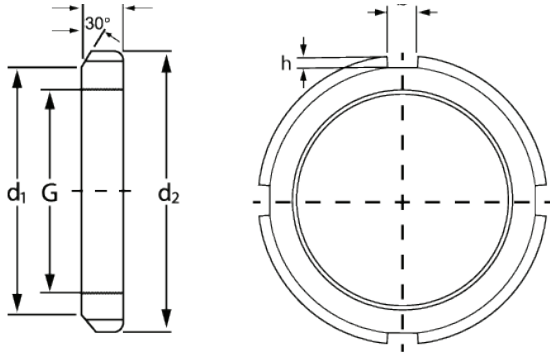


Series AH(X)3 - AH(X)23 - AH(X)32 d_1 35 - 190 mm

Withdrawal Sleeve	G	d_1	L	L_1	B	Lock Nut	Weight
		mm	mm	mm	mm		kg
AHX 3220	M 110 x 2	95	73	77	11	KM 22	0,767
AHX 2320	M 110 x 2	95	90	94	16	KM 22	0,998
AHX 322	M 120 x 2	105	63	67	12	KM 24	0,663
AHX 3222	M 125 x 2	105	82	86	11	KM 25	1,04
AHX 2322	M 125 x 2	105	98	102	16	KM 25	1,35
AHX 3224	M 135 x 2	115	90	94	13	KM 27	1,3
AHX 2324	M 135 x 2	115	105	109	17	KM 27	1,6
AHX 3226	M 145 x 2	125	98	102	15	KM 29	1,58
AHX 2326	M 145 x 2	125	115	119	19	KM 29	1,97
AHX 3228	M 155 x 2	135	104	109	15	KM 31	1,84
AHX 2328	M 155 x 2	135	125	130	20	KM 31	2,33
AHX 3230	M 165 x 2	145	114	119	17	KM 33	2,22
AHX 2330	M 165 x 2	145	135	140	24	KM 33	2,82
AH 3232	M 180 x 3	150	124	130	20	KM 36	4,08
AH 2332	M 180 x 3	150	140	146	24	KM 36	4,72
AH 3234	M 190 x 3	160	134	140	24	KM 38	4,8
AH 2334	M 190 x 3	160	146	152	24	KM 38	5,25
AH 3236	M 200 x 3	170	140	146	24	KM 40	5,32
AH 2336	M 200 x 3	170	154	160	26	KM 40	5,83
AH 3238	M 210 x 3	180	145	152	25	HM 42	5,9
AH 2338	M 210 x 4	180	160	167	26	HM 42	6,63
AH 3240	M 220 x 4	190	153	160	25	HM 44	6,68
AH 2340	M 220 x 4	190	170	177	30	HM 44	7,54

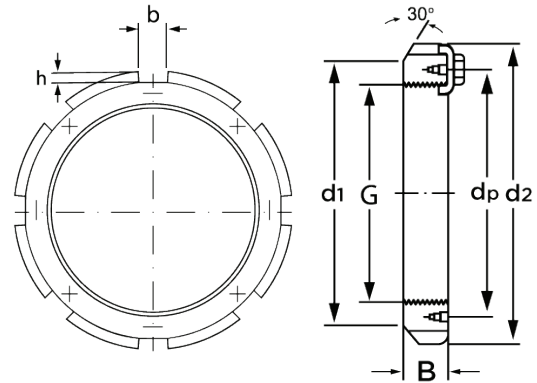
Technical Drawings

KM(L) and HM..T lock nuts



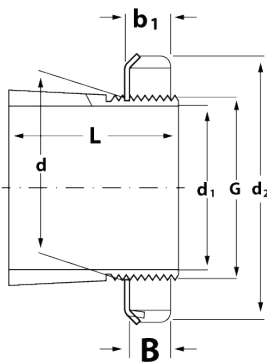
Series G: M10x0.75 - Tr280x4

HM lock nuts



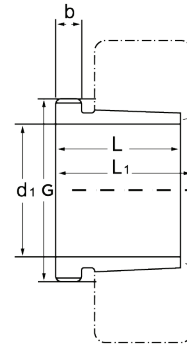
Series HM 30, HM 31
G: Tr220x4 - Tr1120x8

Adapter sleeves (metric)



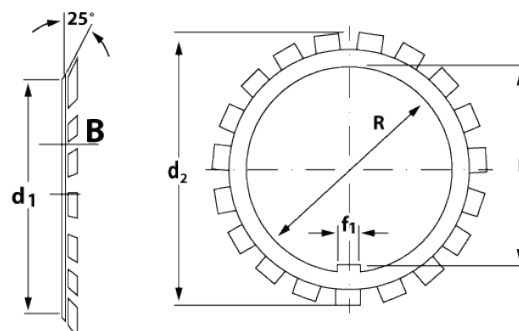
Series H2 - H3- H31
 d_1 17 - 180 mm

Withdrawal sleeves (metric)



Series AH(X)3 - AH(X)23 - AH(X)32
 d_1 35 - 190 mm

MB(L) lock washers



Series R: 10 - 280 mm



Contact Us

Orta Mahalle. Maltepe Cad. Emintaş Onur Sanayi Sit. No: 29 / 238 34030

Bayrampaşa İstanbul /Türkiye
+90 212 565 2501 - 577 61 27

info@mertasmakina.com | www.mertasmakina.com

